

# Research on Cooper ethical decision model based on Chinese opera

Yuan Qin\*

*Conservatory of Music, Suzhou University, Anhui, 234000, China*

*Received 1 October 2014, www.cmnt.lv*

---

## Abstract

The effectiveness of Chinese opera decision directly affects the quality of traditional opera. In the era of rapid development of internet technology today, the transmission mode of opera has changed. Its spreading range is wider, and its propagation speed is faster. For not considering the ethical factors, traditional opera decision is easy to have decision deviation. With reference to the theory of Cooper ethical decision model, the basic framework of Chinese opera ethical decision is constructed, including its definition, criterion, flow block diagram, etc.

*Keywords:* Chinese opera decision, ethical decision, Cooper's ethical decision model

---

## 1 Introduction

The nature of opera determines the reciprocal interaction between opera activity and social development. From the transmission mode of word of mouth to printing transmission and to the electronic transmission until now, technique has brought tremendous impact and changes to the video record and lineage of opera. Everyone who engages in the performance, direction and even the practice and research of different operas will be more or less involved in it. It is a series of decision process [1-3] in nature about how to conduct identification and selection of all kinds of opera script, performing form, etc. To have opera activity and social development interact harmoniously, the quality of opera decision must be improved. However, the tendency of decision utilitarianism has appeared in many aspects, such as the change of transmission mode, appearance of decision deviation, opera compilation, opera performance, etc. In order to pursue economical benefits, the decision deviation appears. To some extent, it violates moral theory and affects the quality of opera. Therefore, traditional decision should transform into ethical decision. In decision-making process, it should comply with moral ethic and set up correct view of life value.

## 2 Overview of Cooper's ethical decision model

Terry L Cooper, American administrative ethicist, proposed the construction of responsible management model based on administrative ethical problem and divided the ethical thinking into four levels [4,5]: emotional expression level: to show one's own emotion tendency for ethical problems. This expression level is the initial form of one's value judgment which has no influence on the event itself;

moral rule level: the first level of seriously raising question and seriously answering it. To think with the moral criteria of daily life; ethical analysis level: when the available moral rule is still unable to make the decision, then it is necessary to conduct basic rethink of our moral rule. Ethic code has clearly connected value and way of act together, which makes it more specific and explicit; after the ethic level: the last level of ethical thinking of administrative staff. Most of the administrators cannot reach this abstract philosophical thinking level. Only under the coerce of specific stubborn and grumpy opponent, or been tightly grasped by a kind of deeply disappointed feeling of disillusionment of dream, or facing comprehensive personal crisis, will we use this level.

From the perspective of practice, Cooper further put forward the process of ethical decision model: to cognize ethical problems, that is to determine ethical problems by describing facts; to demarcate alternative way, that is to assume as much ways as possible to solve ethical problems and to evaluate these ways; to imagine the consequences and to compare the "the profit and lose value" of each consequence; after comparison, to determine the combination of some or several ways and to make the decision.

At last Cooper ethical decision model was proposed: to combine the elements of responsible behavior and the elements of personal ethical autonomy, and to generate resultant force through interaction in practice.

## 3 Researches of traditional opera decision and opera ethic

Opera is a unique comprehensive national traditional art in China. It not only includes literature, music, dance, painting, etc, but also involves various performing arts, such as

---

\*Corresponding author's e-mail: yuanqinqy@163.com

martial art, acrobatics, etc. It has more than 300 types of opera and numerous s [6]. Traditional opera decision generally includes two levels: the setting of the positioning, collection, ways of evaluation, etc is determined by the opera committee; the selection and adoption of opera script. At present, only a few of scholars conduct researches on opera ethical decision from many aspects, such as the ethical principle, ethical value, ethical basic content, ethical puzzle of opera [1].

Opera ethical principle refers to the basic principles that should be followed when opera decision makers adopting script. That is to combine social moral requests with practice, which mainly include subject free, principle of autonomy, principle of justice, equality and honesty, etc; opera decision ethical value refers to the actual contribution of decision maker to the society. The features and particularities of opera activities determine that serving the people is the basic principle of opera decision ethical value. The true, the good and the beautiful is the ideal state of opera decision ethical value. The basic content of opera ethics include devoting to professional dedication, sticking to principle, insisting on socialist, respecting opera maker and performer, etc. The ethical confusion of opera is caused by conflicts, such as opera goal, role, responsibility or benefits, etc. In the current opera, popularize and commercialize things are increasingly increased, while innovative and unique things are relatively insufficient.

The ethical research of opera in this paper mainly focuses on the analysis from decision maker. There is a close correlation between opera decision and opera ethics, and opera decision must be conducted that conform to the requirement of social ethics and morals. Therefore, the promotion of opera ethical decision is benefit to the perfection of opera decision theory.

#### **4 The impact of the opera transmission method evolution to opera ethical decision**

Chinese opera has a long history, and it is a shining card of Chinese nation. The transmission mode of opera has greatly changed, which is changed from word of mouth to printing and to the current electronic transmission mode. Thus, transmission, communication and sharing of opera become more convenient and efficient, which provides platform for improving the attention of whole nation to opera, stimulating the cultural creativity of opera worker and lifting spirituality of whole nation [6]. However, under interconnection technique, no limitation for delivering content has produced impact to opera ethics. According to personal likes and dislikes or to cater to audience tastes, opera creator and disseminator would spread immoral opera content. This situation would happen sometimes, which has caused adverse effect on society. The ordinary opera decision is unable to meet the requirement of new transmission situation. Therefore combined with the proposal application of Cooper's ethical opera decision,

opera creator and transmitter conduct selection on opera in the core idea of opera. They also supervise and control the transmission of opera from internal and external two aspects. The external control refers to control the creator and transmitter from the outside through ethical legislation and regulations. The internal control refers to intensify the inner values and ethics of creator and transmitter and to perfect opera ethical decision through ethical training.

#### **5 Enlightenment of the model theory of modern ethical decision and Cooper's ethical decision to opera decision**

##### **A. MODERN ETHICAL DECISION THEORY.**

Modern ethical decision derives from the west and is applied to the management of business decision. The ethical decision model is established because of the business scandals that frequently outbreak in western society in the 1970s. It had attracted people's attention to the ethical problems of enterprises. Ethical conduct refers to the behavior that does harmful or good to others and society under the certain moral consciousness. Ethical conduct is produced after ethical decision process, of which refers to the appearance of corresponding ethical behavior is after the appearance of ethical or not decision process [7].

There exist certain commonalities between ethical decision and ordinary decision, which generally has the following characteristics: both were acted as cognitive activity, thus any decision is the behavior of process rather than isolation; for decision makers live in social relations and they have emotionality. Therefore, both decisions will be influenced by emotional and social factors; any decision should be measured the needs and preferences by decision maker.

There also exist certain distinctions between ethical decision and ordinary decision: ethical decision maker object will conduct ethical defense for decision plan and conduct ethical instruction for their behavior. Ethical decision includes the inner psychological activities of the ethical judgment of decision maker (behavior of right and wrong) and ethical evaluation (good or bad and good and evil of behavior), no matter whether the decision maker was asked to do that by the exist pressure in the outside world. In addition, ethical decision involves moral emotion. Ordinary decision maker will not facing moral choice and they do not have moral emotion, such as compunction, shame, etc. However, moral emotion is the by-product of ethical decision and the influencing factor throughout decision process.

Modern ethical decision divided it into four phases: ethical cognition: to realize the ethical issues; ethical judgment: to conduct moral evaluation for alternative behavior plan; ethical intention: what kind of behavior that the individual subjectively choose; ethical behavior, that is the implementation of intention. It shows the external moral or immoral behavior. The four phases describes the inner

process before the explicit of behavior. Though the four parts in practical decision are not appeared successively, on the whole process, the ethical decision process has shown these phases and there are influences among each other.

**B. ENLIGHTENMENT ON OPERA ETHICAL DECISION.**

Although ethical decision derives from business management and Cooper’s ethical decision derives from administrative management decision, Chinese opera has the three conditions of ethical decisions: opera decision object and the opera of been decided involve ethical problems; the opera decision maker and the maker himself have the ethical subject of free will, they can realize the existence of ethical problems and make judgment and action; opera decision maker can judge the “ethical ” and ”not ethical” of decision result. Therefore, according to the above ethical decision, ethical decision theory can be applied to opera decision so as to construct opera ethical decision.

**6 Framework of Chinese opera ethical decision**

**A. DEFINITION OF CHINESE OPERA ETHICAL DECISION.**

Opera ethical decision refers to the process of evaluation, comparison and screening of opera script, opera performance way, opera transmission mode, etc by decision maker and decision team who have certain ethics, which is based on certain ethical criteria.

**B. CRITERIA OF CHINESE OPERA ETHICAL DECISION.**

The conduct of opera ethical decision needs certain ethical criteria, including the subject ethical criteria and the object ethical criteria of opera ethical decision.

The decision subject ethical criteria refer to have the moral and ethical requirement of ordinary decision maker and main principal with specific opera decision-making power. The subject ethical criteria of opera ethical decision are reduced to the following several aspects: autonomy. In respect for their own autonomies, decision maker should also.

**C. PROCESS OF CHINESE OPERA ETHICAL DECISION**

- 1) Judge the opera legality: examine whether the opera content is conforming to the requirements of national laws and regulations, veto those that do not conform that, and conduct authenticity judgment of those that conform that.
- 2) Judge the opera authenticity: examine whether there exist phenomena in opera creator, such as copying, plagiarism, etc. Conduct moral judgment if conform, otherwise to veto.
- 3) Judge the opera morality: conduct moral judgment of operas that meet the above requirements and examine whether it has adverse influence on society. If there has immoral content, then it should be vetoed. If it conforms to the requirement, then it will be as the alternative script.

- 4) Conduct comprehensive evaluation on the alternative script from aspects of society, technicality and standard ability, and select the best opera script for performance.

This ethical decision procedure is formulated mainly based on the object ethical criteria of opera decision. However, subject ethical decision often interacts with the object ethical decision. Therefore, much attention should be paid to opera ethic, and opera decision should convert from ordinary opera decision to opera ethical decision. Flow diagram of Chinese opera ethical decision is shown in Figure 1:

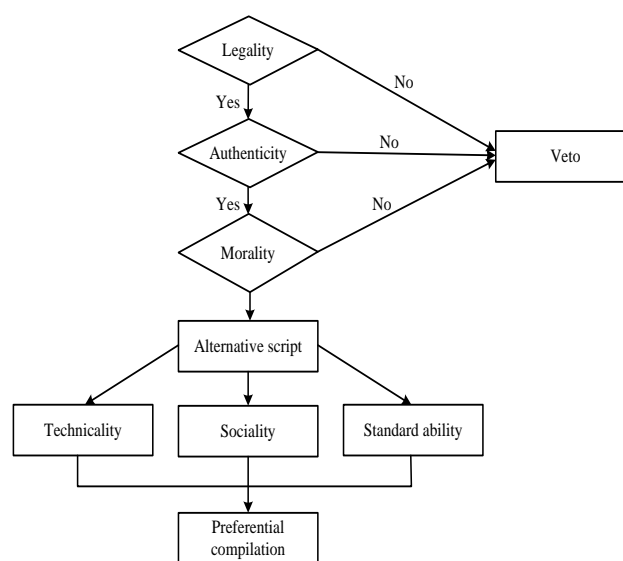


FIGURE 1 Flow diagram of Chinese opera ethical decision

**7 Conclusions**

Opera ethic is an important problem that opera decision maker need to face. Cooper’s ethical decision has provided beneficial enlightenment for Chinese opera both in theory and practice. Much attention should be paid to the core “opera decision responsibility”. Then the theoretical learning and the related skill training of opera ethical decision should be strengthened. Decision maker should be cultured to reflect the value problems and principle problems. Decision mechanism should be controlled and integrated from the inside and outside aspects, that is, the inter-coordination and development together of ethic and law. At last, personal moral quality is implanted into institutional framework and practical decision, which provides theoretical foundation and decision guidance for Chinese opera decision [4].

**Acknowledgement**

Research project of Suzhou Institute "diversified teaching approaches to promote quality-oriented education and cultivation of music talents" (project number szxyjyxm 201261).

## References

- [1] Xianghong L 2011 Research of Compilation of Ethic Decision *Journal of Guangxi University for Nationalities* 33(4) 183-6
- [2] Boliang X 2010 Chinese Xiqu Opera under the International Context *Hundred Schools in Art* (1) 77-84
- [3] Rui Y 2014 Network Communication of Traditional Chinese Opera *Shanxi: Shanxi Normal University*
- [4] Zhao L 2010 Primary Investigation of Cooper's Administrative Ethical Theory *Morality and Civilization* (1) 139-43
- [5] Qi L, Zhisheng X 2013 Research of Cooper's Administrative Responsible Ethical Theory and Its Contemporary Values *Seeker* (7) 91-4
- [6] Xiaoxia Y 2013 Research on the Evolution of Traditional Opera Transmission Pattern *Jiangxi: Nanchang University*
- [7] Hongmei W, Hong L 2006 Research Evaluations of Western Ethical Decision *Foreign Economics & Management* 28(12) 48-55

## Author



**Yuan Qin, born in 1981, Anhui Province, China.**

**Current position, grades:** lecturer.

**University studies:** Bachelor degree in musical performance, Anhui Normal University in 2003; postgraduate degree in musicology, Anhui Normal University in 2010.

**Scientific interest:** art teaching and art studies.