

# Study on the optimization of maintenance strategy based on life cycle cost estimate of transformer

Zhang Han<sup>1</sup>, Qian Hai<sup>1</sup>, Chang An<sup>1</sup>,  
Zhou Quan<sup>2</sup>, Sun Chao<sup>2\*</sup>, Wang Youyuan<sup>2</sup>

<sup>1</sup> China South Grid Extra High Voltage Transmission Ltd., Guangzhou, China

<sup>2</sup> State Key Laboratory of Power Transmission Equipment & System Security and New Technology, Chongqing University, China

Received 1 March 2014, www.cmnt.lv

## Abstract

As the key equipment of power system the status of power transformer impacts the security and stability of the grid. Make appropriate maintenance strategies for life cycle according to its operating status is important for the safe operation of the power grid. The power transformer life cycle cost (LCC) is analyzed through the establishment of the power transformer LCC decomposition model from the perspective of the life-cycle management. The cost – effectiveness of maintenance strategy is studied based on the analysis of maintenance costs and military age change under different maintenance level. Then a power transformer maintenance cost-performance optimization model and introduce genetic algorithm to solve the model. The maintenance optimization model operational, scientific and effective through case studies.

*Keywords:* Life Cycle Cost; Condition-based Maintenance; Power Transformer; Genetic Algorithms

## 1 Introduction

As the key equipment of power system the status of power transformer impacts the security and stability of the grid. However, blindly overhaul to improve the reliability of the transformer will significantly increases the cost of operation and maintenance. Life cycle management, considering reliability and economy, based on transformer risk assessment and life cycle cost analysis, can select the best maintenance strategy of a transformer to reduce optimize equipment operation and maintenance costs[1].

In recent years, many research institutions have done a lot of research on the state maintenance theory[2-12]. Transformer operation and maintenance costs account for a large proportion of the total life cycle stages, respectively, accounted for roughly 35% to 70% [13-14]. Although the current overhaul analyzes the economy of condition-based Maintenance, but did not consider the time value of money, its maintenance cost is static. It has theoretical significance and practical value to make a cost- effectiveness ratio transformer optimal maintenance decisions on the basis of ensuring the reliability of the device.

In this paper, the power transformer LCC is analyzed through the establishment of the power transformer LCC decomposition model from the perspective of the life-cycle management. The cost – effectiveness of maintenance strategy is studied based on the analysis of maintenance costs and military age change under different maintenance level. Then a power transformer maintenance cost-performance optimization model and introduce genetic algorithm to solve the model.

## 2 The power transformer LCC decomposition model

According to the article, the values of LCC was calculated by the LCC calculation processes[15,16]. Generally, LCC can be calculated by equation:

$$LCC = CI + CO + CF + CD, \quad (1)$$

where LCC is life cycle cost of a transformer; CI is the initial investment costs of the transformer, CO is the operating and maintenance costs of the transformer, CF is the fault costs of the transformer, CD is the decommissioning costs of the transformer.

$$CI = CI_E + CI_I + CI_O, \quad (2)$$

where  $CI_E$  is original equipment costs which consists of the cost of equipment, tools and spare parts transportation,  $CI_I$  is installation costs which consists of the cost of delivery and installation,  $CI_O$  is other costs, such as some monitoring devices.

$$CO = CO_1 + CO_2, \quad (3)$$

where  $CO_1$  is wastage cost,  $CO_2$  is maintenance cost which consists of labor costs, environmental costs and maintenance costs[19].

$$\Delta W = (P_0 + \beta^2 P_k) \times 8760, \quad (4)$$

$$CO_1 = \Delta W \times a, \quad (5)$$

$$CO_2 = \lambda_p CO_p + \lambda_E CO_E + \lambda_M CO_M, \quad (6)$$

where  $\Delta W$  is annual energy loss,  $\beta$  is average load(kW),  $P_k$  is loss of load(kW),  $P_0$  is no-load loss(kW),  $a$  is electricity

\* Corresponding author's e-mail: afjl392@163.com

price,  $CO_P$  is labor costs,  $CO_E$  is environmental costs,  $CO_M$  is maintenance costs,  $\lambda_P, \lambda_E, \lambda_M$  are coefficients of different part.

The fault costs of the transformer mainly points outage costs and repair costs[20].

$$CF = b \times S_N \times \beta \times \cos \varphi \times T + \lambda \times RC \times MTTR, \quad (7)$$

where  $b$  is profit of electricity,  $S_N$  is rated capacity,  $\cos \varphi$  is average power factor,  $T$  is stop working hours,  $\lambda$  is average fault time,  $RC$  is repair costs per hour,  $MTTR$  is repair time.

$$CD = CD_T - CD_R, \quad (8)$$

where  $CD_T$  is total decommissioning costs,  $CD_R$  is residual value. Normally,  $CD_R$  is a certain percentage of  $CI_E$ .

### 3 Cost analysis based on discount rate

With the development of economy, the value of the finance will change over time, the actual value of the finance are different in two different moments of time. Transforms have a long service life, so the time value of finance must be consider. In this article, the time value of finance means discount rate.

If discount rate  $i$  is a constant value, then value  $P$  became  $F$  after  $n$  year later.

$$F = P \times (1+i)^n, \quad (9)$$

$$P = F \times \frac{1}{(1+i)^n}, \quad (10)$$

If value  $P$  is equally recover in  $n$  years, the annual amount is annuity  $A$ .

$$A = P \times i \frac{(1+i)^n}{(1+i)^n - 1}, \quad (11)$$

$$P = A \times \frac{(1+i)^n - 1}{i(1+i)^n}, \quad (12)$$

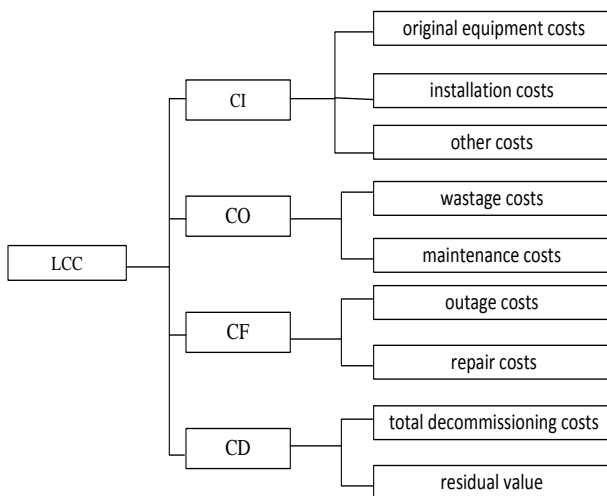


FIGURE 1 Transformers LCC decomposition model

## 4 Transformer optimal maintenance model

This paper presents the idea of optimizing maintenance time. Select the time for the maintenance to get the lowest total cost of maintenance on condition that the performance of transform is not less than the minimum limit.

### 4.1 MAINTENANCE COST ANALYSIS

Usually, transformers need overhaul two or three times during the life cycle. In this article, the overhaul is two, and the cost  $M_m$  are same. The fault costs of the transformer are ignore for the percent of it in LCC is too low.

According to the actual situation, transformers need minor overhaul at least once a year. And the cost is increased with age. In this article, the cost of minor overhaul is defined as a linear function (13).

$$M_s = \beta \times W_1 \times t, \quad (13)$$

where  $M_s$  is the cost of minor overhaul,  $\beta$  is a coefficient,  $W_1$  is initial investment costs,  $t$  is the age of transformer.

### 4.2 THE COST – EFFECTIVENESS OF MAINTENANCE

In the life cycle, maintenance after a fault and minor overhaul do not change the failure rate, the reduction factor of age  $\alpha=0$ . Overhaul is the overall repair and maintenance of equipment, reduction factor of age  $\alpha_3=0.8$ .

If the time of overhaul are  $t_1$  and  $t_2$ , then equivalent age of transformer can be described in general formula (14) below.

$$t_a = \begin{cases} t_n & t_n \leq t_1 \\ t_n - \alpha_3 t_1 & t_1 < t_n \leq t_2 \\ t_n + (\alpha_3^2 - \alpha_3) t_1 - \alpha_3 t_2 & t_n > t_2 \end{cases}, \quad (14)$$

And the cost of minor overhaul can be described in general formula (15) below.

$$M_s(t_a) = \beta \times W_1 \times t_a = M'_s(t_n) = \begin{cases} \beta \times W_1 \times t_n & t_n \leq t_1 \\ \beta \times W_1 \times (t_n - \alpha_3 t_1) & t_1 < t_n \leq t_2 \\ \beta \times W_1 \times [t_n + (\alpha_3^2 - \alpha_3) t_1 - \alpha_3 t_2] & t_n > t_2 \end{cases}, \quad (15)$$

To ensure the reliability of the transformer, the failure rate need to be control in a low level. So the time of overhaul must ensure the failure rate will not exceeded its threshold value.

Maintenance costs consisting almost entirely of minor overhaul cost and overhaul cost. The minor overhaul cost is increase with years. Then, two overhaul time is the optimization variables in this model. The objective is a fewest cost.

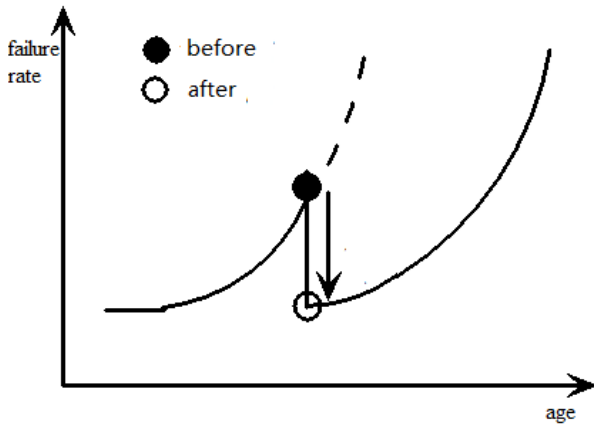


FIGURE 2 Influence of overhaul on failure rate of the transformer

Then the object function and restrictive condition can be described in general formula (16) below.

$$\begin{cases} \min f = \sum_{t_n=1}^{T_{age}} C_s(t_n) + C_m(t_1) + C_m(t_2) \\ \text{s.t. } \lambda(t_a) = \lambda'(t_n) \leq \lambda_0 \end{cases}, \quad (16)$$

where  $T_{age}$  is the life of a transformer,  $\lambda_0$  is the threshold value of the failure rate.  $\lambda(t_a)$  is the failure rate,  $C_s(t_n)$  is annual maintenance costs based on discount rate,  $C_m(t_1)$  and  $C_m(t_2)$  are overhaul costs based on discount rate.

$C_s(t)$ ,  $C_m(t_1)$  and  $C_m(t_2)$  can be described in general formula below.

$$C_s(t_n) = \frac{M_s'(t_n)}{(1+i)^{t_n}}, \quad (17)$$

$$C_m(t_1) = \frac{M_m}{(1+i)^{t_1}}, \quad (18)$$

$$C_m(t_2) = \frac{M_m}{(1+i)^{t_2}}, \quad (19)$$

#### 4.3 BASED ON GENETIC ALGORITHM TRANSFORMER OPTIMAL MAINTENANCE MODEL SOLUTION

Transformer repair process can be seen as a model solution for the minimum objective function optimization problems, mathematical programming model can be described in general formula (20) below.

$$\begin{cases} \min f(x) \\ \text{s.t. } \begin{cases} x \in R \\ R \in U \end{cases} \end{cases}, \quad (20)$$

In the formula, function  $f(x)$  as decision variables,  $x \in R$  and  $R \in U$  as constraints,  $U$  is the basic space;  $R$  is a subset of  $U$ . To meet the constraints of the solution of  $X$  is called the feasible solution; set  $R$  said the feasible solution set.

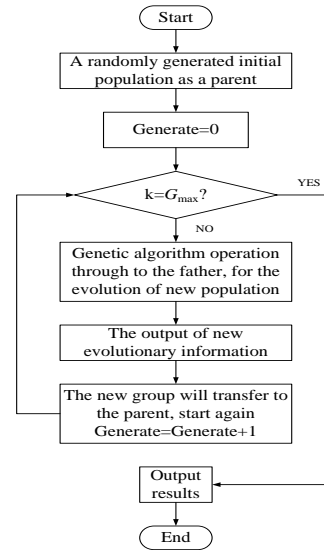


FIGURE 5 Calculation procedure of Genetic Algorithm

The optimization problem is solved using genetic algorithm [23], the flow chart of genetic algorithm as shown in Fig. 5, the specific steps are as follows:

- ① The initialization: setting the evolution algebra counter  $k=0$ , set the maximum number of  $G_{max}$ , using binary encoding, randomly generated  $n$  individuals as the initial population of  $P(0)$ .
- ② Individual evaluation: Calculation individual fitness of group  $P(k)$ , fitness function to be optimized by the objective function, namely  $f(x)$ .
- ③ For genetic manipulation, including selection, crossover and mutation:
  - 1) Selection operations: selection operator acting on the group. The purpose is to direct genetic individual optimization to the next generation or by paired crossover generates new individual genetic to the next generation. Selection is based on individual fitness evaluation.
  - 2) Crossover: the crossover operator acting on the group. The so-called cross refers to the part of the structure of two parent individuals to replace the restructuring and generate new individual operation. The crossover operator plays a core role in genetic algorithm.
  - 3) Mutation operation: the mutation operator acting on the group, is to change values for some loci of individuals in the population on the gene. Group  $P(k)$  followed by selection, crossover and mutation, to calculate next generation  $P(K_1)$ .
- ④ Termination condition: if  $k = G_{max}$ , the evolution of the obtained with the minimum fitness individuals as the optimal solution output, terminate the computation.

In order to solve the time and precision of solution equilibrium of GA operation, The value range of group size  $n$  is [30,160]; the crossover probability  $P_c$  value range is [0.25,0.75]; for the balance of population diversity and search randomness, mutation probability  $P_m$  values range is [0.01,0.2].

5 The example analysis

Maintenance optimization of a 500kV transformer, considering the value of time and money, transformer general repairs during the life cycle cost as shown in formula (21).

$$\sum_{t_n=1}^{T_{age}} C_s(t_n) = \frac{M_s'(t_n)}{(1+i)^{t_n}} = \begin{cases} \frac{\beta \times W_1 \times t_n}{(1+i)^{t_n}} & t_n \leq t_1 \\ \frac{\beta \times W_1 \times (t_n - \alpha_3 t_1)}{(1+i)^{t_n}} & t_1 < t_n \leq t_2 \\ \frac{\beta \times W_1 \times [t_n + (\alpha_3^2 - \alpha_3)t_1 - \alpha_3 t_2]}{(1+i)^{t_n}} & t_n > t_2 \end{cases}, \tag{21}$$

$$= \beta \times W_1 \times \left( \sum_{k=1}^{t_1} \frac{k}{(1+i)^k} + \sum_{j=t_1+1}^{t_2} \frac{j - \alpha_3 t_1}{(1+i)^j} + \sum_{r=t_2}^{T_{age}} \frac{r + (\alpha_3^2 - \alpha_3)t_1 - \alpha_3 t_2}{(1+i)^r} \right)$$

Substitute it into formula (16) to get the objective function to be optimized for:

$$f = \sum_{t_n=1}^{T_{age}} C_s(t_n) + C_m(t_1) + C_m(t_2) \tag{22}$$

$$= \beta \times W_1 \times \left( \sum_{k=1}^{t_1} \frac{k}{(1+i)^k} + \sum_{j=t_1+1}^{t_2} \frac{j - \alpha_3 t_1}{(1+i)^j} + \sum_{r=t_2}^{T_{age}} \frac{r + (\alpha_3^2 - \alpha_3)t_1 - \alpha_3 t_2}{(1+i)^r} \right) + \frac{M_m}{(1+i)^{t_1}} + \frac{M_m}{(1+i)^{t_2}}$$

Formula (22) optimization model is given as the constraints:

s.t.  $\lambda(t_a) = \lambda'(t_n) \leq \lambda_0$ , (23)

The function of transformer failure rate  $\lambda$  is the equivalent of age  $t_a$ , the failure rate is the function  $\lambda(t_a)$  as the formula (24):

$$\lambda(t_a) = 0.00294 + 0.01 \times (e^{0.05t_a} - 1), \tag{24}$$

Substitution formula (14) to get function  $\lambda'(t_n)$  of failure rate on nominal age for  $t_n$ :

$$\lambda'(t_n) = \begin{cases} 0.00294 + 0.01 \times (e^{0.05t_n} - 1) & t_n \leq t_1 \\ 0.00294 + 0.01 \times (e^{0.05(t_n - \alpha_3 t_1)} - 1) & t_1 < t_n \leq t_2 \\ 0.00294 + 0.01 \times (e^{0.05(t_n + (\alpha_3^2 - \alpha_3)t_1 - \alpha_3 t_2)} - 1) & t_n > t_2 \end{cases}, \tag{25}$$

The  $\beta = 0.002$ ,  $W_1 = 4500$  million; transformer overhaul costs  $M_m = 200$  million; transformer fault rate threshold for  $\lambda_0 = 0.01$ ; the life of the transformer is  $T_{age} = 30$ . Assuming that the transformer operation within 5 years will not be overhauled, will set the range of  $t_1$  and  $t_2$  were [5, 30] and [10, 30].

Parameters of genetic algorithm were set as follows: the population size is set to 25, the crossover probability is 0.85, and mutation probability is 0.15, the other parameter is set to the default value. Using Matlab genetic toolbox GADS to solve formula (10) and (12) limiting conditions

are given. After the 50 generation genetic iterative calculation, get the minimum maintenance cost  $f = \$5479700$ , two times of overhaul are  $t_1 = 7.3333$ ,  $t_2 = 16.3538$ . Overhaul time unit solution for years, the fractional transform for overhaul time months were approximately put into operation after 7 years and 4 months and 16 years 4 months.

5 Conclusion

In this paper, an optimization model of maintenance of transformer based on life cycle cost, we obtain the following conclusions:

- ① With the previous point of repair scheme research on static repair cost based on different, from the point of view of life asset management point of view, considering the time value of money, set up a maintenance optimization model based on the dynamic cost of repair.
- ② The age reduction factor calculated equivalent age, the equivalent age as the link among the repair scheme, the repair cost and reliable performance, and the repair effect on the repair cost and reliability are quantified.

Acknowledgments

This work was supported by the National high technology research and development program (863 Program) (2012AA050209).

References



[1] Han Jingti 2008 Aviation Equipment Life Cycle Cost and Economic Analysis *National Defense Industry Press*

[2] Liu Yongmei and Sheng Wanxing 2007 Optimization Model for Distribution Equipment Maintenance Scheduling Based on Network Topology and Genetic Algorithm *Power System Technology* vol 21, 11-15

[3] Hu Wentang, Gao Shengyou, Lu Zong et al 2010 Maintenance Strategies Optimization of Equipment Using Risk Assessment *High Voltage Engineering* vol 11, 2699-2705

[4] Lu Guojun, Fang Yuyang, Qin Yu 2012 Research on Maintenance Strategy of Transformer Based on State and Risk Assessment *Water Resources and Power* vol 5, 167-171

- [5] Zhao Dengfu, Duan Xiaofeng, Zhang Lei 2012 Maintenance Scheduling of Power Transmission Equipment Considering Equipment Condition and System Risk *Journal of Xi'an Jiao Tong University* 46(3), 84-89
- [6] Wang Yi and Wang Huifang 2010 Research on maintenance type selection with CBM technology based on effectiveness and cost analysis *Power System Protection and Control* 38(19), 39-44.
- [7] Lin Lingbing, Liu Xianlin and Han Source 2012 Optimization model and algorithm for maintenance scheduling of power supply equipments *Electric Power Automation Equipment* 32(8), 91-94.
- [8] Li Ming, Han Xueshan, Yang Ming and Guo Zhihong 2012 Decision-making Model and Solution of Condition-based Maintenance for Substation. *Proceedings of the CSEE* 32(25), 196-202
- [9] Pan Lezhen and Lu Guoqi 2010 Decision-making Optimization of Equipment Condition-based Maintenance According to Risk Comprehensive Evaluation. *Automation of Electric Power Systems* 34(11), 28-33.
- [10] Production Technology Department of China State Grid Corp 2008 The Equipment State Maintenance Regulations and Technical Standard Compilation *China Electric Power Press*
- [11] Liu Wenying, Xie Chang, Wen Jing, et al. 2013 Optimization of Transmission Network Maintenance Scheduling Based on Niche Multi-objective Particle Swarm Algorithm *Proceedings of the CSEE*, 3(4), 141-149
- [12] Zhang Huaiyu, Zhu Songlin, Zhang et al. 2009 Research and Implementation of Condition-Based Maintenance Technology System for Power Transmission and Distribution Equipments *Power System Technology* 33(13), 70-73
- [13] Takehara A., Tanaka H., Shibata T., Et Al. 2008 A New Life-Cycle Risk Map (LCRM) for Developing Maintenance Strategies for Transmission Equipment *Power and Energy Society General Meeting – Conversion and Delivery of Electrical Energy in the 21st Century* pp 1-7.
- [14] Shuai Jun Qing 2010 The Electric Power Enterprise Asset Life-Cycle Management Theory, Method, and Application *Chinese electric power press*
- [15] Guo Jiwei, Xie Jingdong and Tang Guoqing 2003 Life Cycle Cost Analysis in Electrical Equipment Management *High Voltage Engineering* 29(4), 13-15
- [16] Fang Daqian 2004 Transformer calculation Handbook *Chinese Water Conservancy and Hydropower Press*
- [17] Lai Jiadong and Yang Xiutai 2008 Research on life cycle cost model of power equipment in the power supply enterprises *Science and Technology Management Research* vol 10, 83-85
- [18] Lu Shi Jun and Li Xiang 2010 Full Life-Cycle Cost Estimation of Substation Project Based on Blind Number Theory *Power System Technology* 34(3), 141 – 145.
- [19] Zhou Haizhen 2001 How to determine the rate of discount income method *China Assets Assessment* vol 4, 13 – 16
- [20] Jiang Yimin 2006 Analysis of Life Cycle Cost of Transformer *TRANSFORMER* vol 12, 188 – 191
- [21] Christoph Meyer, Rik.W.De Doncker 2006 LCC analysis of different resonant circuits and solid-state circuit breakers for medium-voltage grids *IEEE Transactions on Power Delivery* 3(21), 1414 – 1421
- [22] Liu Huayong, Zheng Jianyong and Hu Jijun 2010 Life Cycle Cost and its Management for Power Equipments Considering the Reliability *power Supply* 27(3), 8-11
- [23] Wang Xiaoping 2002 Genetic algorithm -- the implementation of theory, application and software *Xi'an: Xi'an Jiao Tong University Press*

Authors	
	<p><b>ZHANG Han, 1987.1, Jingzhou City, Hubei Province, China</b></p> <p><b>Current position, grades:</b> Clerk  <b>University studies:</b> Huazhong University of Science and Technology  <b>Scientific interest:</b> Equipment condition evaluation  <b>Experience:</b> Work for China South Grid Extra High Voltage Transmission Ltd since 2011; Mainly engaged in power transmission equipment security and analyze.</p>
	<p><b>Qian Hai, 1973, Guangzhou, China</b></p> <p><b>Current position, grades:</b> Director  <b>University studies:</b> Chongqing University  <b>Scientific interest:</b> Equipment condition evaluation  <b>Experience:</b> Work for China South Grid Extra High Voltage Transmission Ltd; Mainly engaged in high voltage direct current transmission (HVDC).</p>
	<p><b>Chang An, 1985.10, Guangzhou, China</b></p> <p><b>Current position, grades:</b> Clerk  <b>University studies:</b> Wuhan University  <b>Scientific interest:</b> Equipment condition evaluation  <b>Experience:</b> Work for China South Grid Extra High Voltage Transmission Ltd. since 2009; Mainly engaged in power transmission equipment security and analyze.</p>
	<p><b>Zhou Quan, 1973, Sichuan Province, China</b></p> <p><b>Current position, grades:</b> Professor  <b>University studies:</b> PhD degree in 2004; Doctoral tutor. Chongqing University.  <b>Scientific interest:</b> Equipment condition evaluation.  <b>Experience:</b> Mainly engaged in power transmission equipment security and analyze, power equipment maintenance decision.</p>
	<p><b>Sun Chao, 1988, Hunan Province, China</b></p> <p><b>Current position, grades:</b> Master  <b>University studies:</b> Chongqing University  <b>Scientific interest:</b> Equipment condition evaluation.  <b>Experience:</b> Mainly engaged in power transmission equipment security and analyze, power equipment maintenance decision.</p>
	<p><b>Zhou Quan, 1971, Sichuan Province, China</b></p> <p><b>Current position, grades:</b> Professor  <b>University studies:</b> PhD degree in 2008. Doctoral tutor. Chongqing University.  <b>Scientific interest:</b> Equipment condition evaluation  <b>Experience:</b> Mainly engaged in power transmission equipment security and analyze, power equipment maintenance decision.</p>